

# SpaceLogic MP130-24T/-230T

Motoric Actuators for Two Position Control  
For VP228E/VP229E PIBCV, DN10...32



## Product Description

MP130-24T and MP130-230T are 2-point three-wire actuators used with **SpaceLogic** PIBCV DN 10...32 valves. The actuator can be used with fan coil units, induction units, small reheaters, recoolers and zone applications in which hot/cold water is the controlled medium. The actuator default factory setting is for the spindle to be fully retracted which equates to a normally open function.

The setting between normally closed and normally open is configured with jumper connections (see "Wiring and connections" for jumper settings).

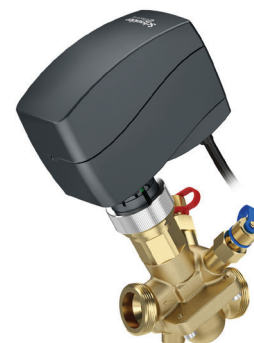
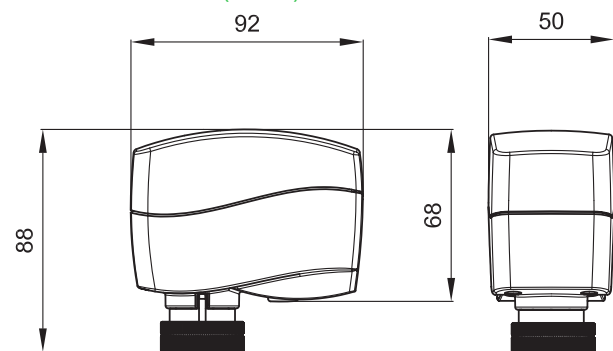
## Specifications

Part Numbers	
24 Vac	MP130-24T
230 Vac	MP130-230T
Power supply	24 Vac, 230 Vac; +10...-15%
Power consumption	1 VA - 24 Vac; 8 VA - 230 Vac
Frequency	50 / 60 Hz
Close off force	200 N
Stroke	5.5 mm
Speed	12 s/mm
Max. medium temperature inside the pipe	130 °C
Ambient temperature	0 ... 55 °C
Storage and transport temp.	-40 ... +70 °C
Protection code	IP 42
Weight	0.3 kg
Sound Power Level	Max. 35 dB(A)
EMC Directive & Standards	2014/30/EU EN 61000-6-2 & EN 61000-6-3
LVD Directive & Standards	2014/35/EU EN 60730-1 & EN 60730-2-14
RoHS2 Directives	2011/65/EU & RoHS2 Amendment 2015/863/EU

## Features

- 2 point three-wire actuator
- Automatic switch-off upon valve closure prevents overload of actuator and valve
- No tools required for mounting
- Maintenance-free lifetime
- Low-noise operation
- Supplied with 1.5 m cable

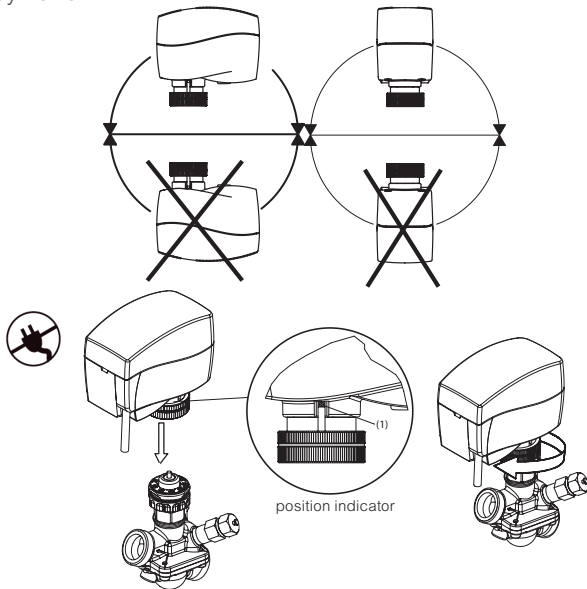
## Dimensions (mm)



MP130 installs to **SpaceLogic** PIBCV 10mm...32mm valves (VP228E and VP229E)

## Mounting and Installation

The actuator should be mounted with the valve stem in either horizontal position or pointing upwards. The actuator is fixed to the valve body by means of a mounting ring, which requires no tools for mounting. The ring should be tightened by hand.

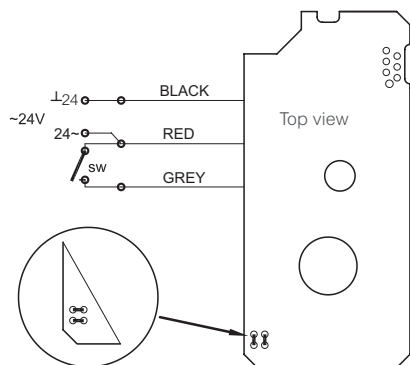
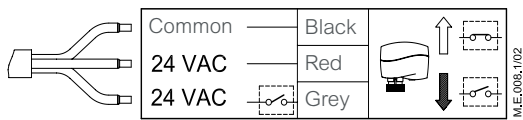


## Wiring and Connections

**NOTE:** It is strongly recommended that the mechanical installation is completed before the electrical installation. Each actuator is supplied with the connecting cable for the controller. **NOTE:** Do not touch anything on the PCB. Do not remove the cover before the power supply is fully switched off.

1. Check the valve neck. The actuator should be in stem up position (factory setting). Ensure that the actuator is mounted securely on the valve body.
2. Wire the actuator according to the wiring diagram.
3. Stem movement is indicated by the Position Indicator (a small pin riding in a channel as shown in (1) above).

MP130-24T



### Jumper setting

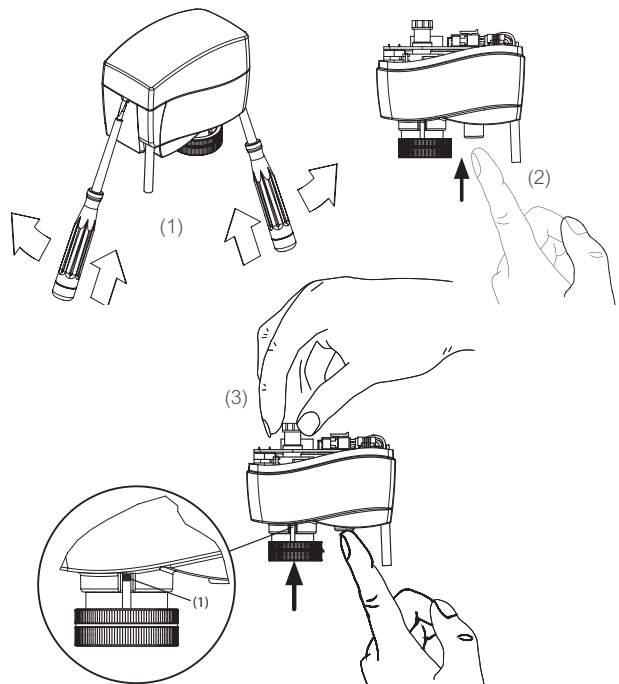
sw=OFF actuator retracted (opens valve)  
sw=ON actuator extracted (closes valve)

sw=OFF actuator extracted (closes valve)  
sw=ON actuator retracted (opens valve) default setting for use with PIBCV valve

## Manual Override

1. Remove cover (1) inserting flat screwdrivers heads into the slots and pry off the cover with an upward motion.
2. Press and hold the button (2) on the bottom side of the actuator during manual override (3) twisting of knob.
3. Replace cover and install actuator on valve.

**NOTE:** A "click" sound after energising the actuator means that the gear wheel has jumped into normal position.



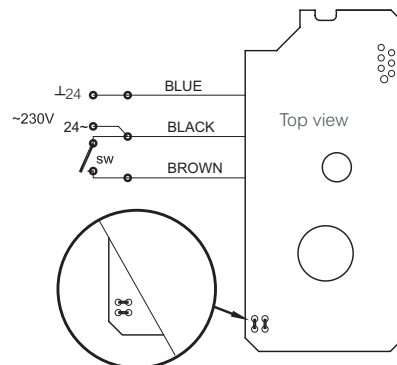
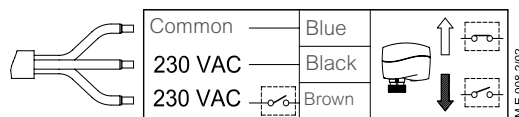
## NOTICE

### RISK OF EQUIPMENT DAMAGE

- Avoid electrical noise interference.
- Do not install near large contactors, electrical machinery, or welding equipment.
- Only use manual override when power is off.

**Failure to follow these instructions may result in damage to the gear train or other mechanical damage.**

MP130-230T



### Jumper setting

sw=OFF actuator retracted (opens valve)  
sw=ON actuator extracted (closes valve)

sw=OFF actuator extracted (closes valve)  
sw=ON actuator retracted (opens valve) default setting for use with PIBCV valve